

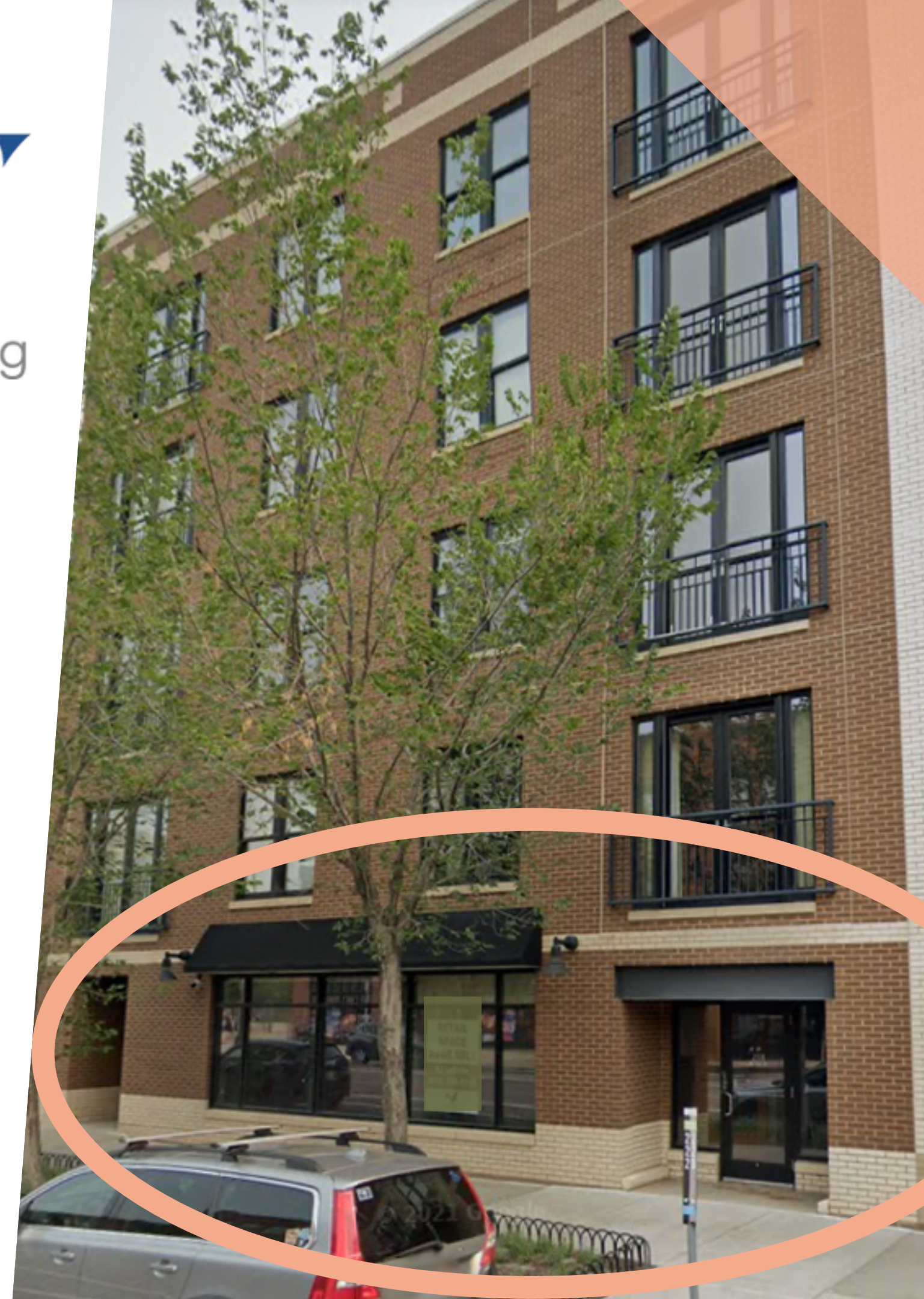
ASSEMBLY

Development • Brokerage • Consulting

218 North 1st Street North Loop

Available For Lease

800 - 2,800 SF



218 N 1st St North Loop

Space:

Available: 800 - 2,800 SF

Uses: Retail, Health, Hospitality, Office

Lease Rate: \$24 - \$33 PSF

Tax/Cam: \$8.05 PSF

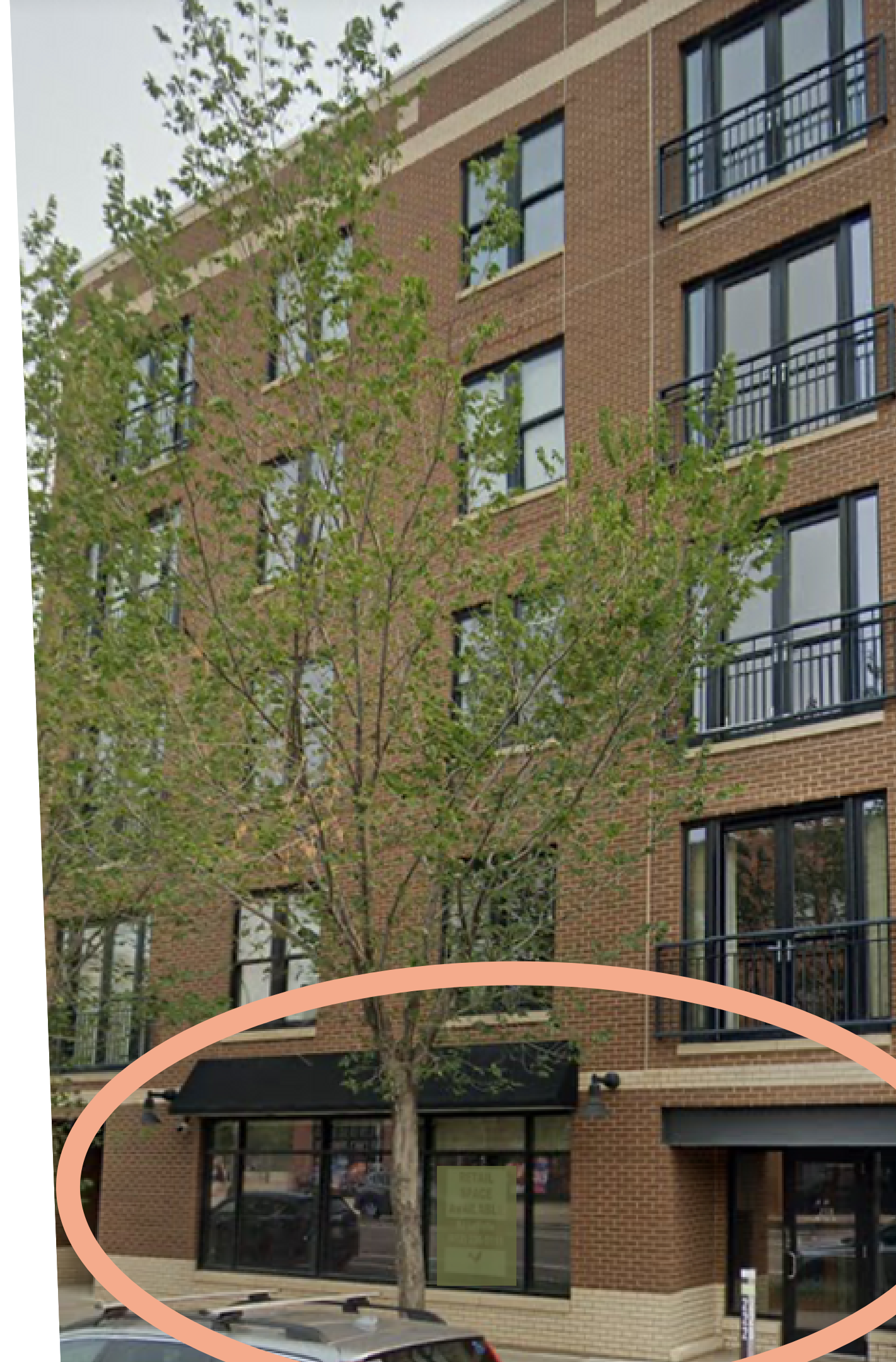
Ceiling Height: 10'

Property:

Year Built: 2013

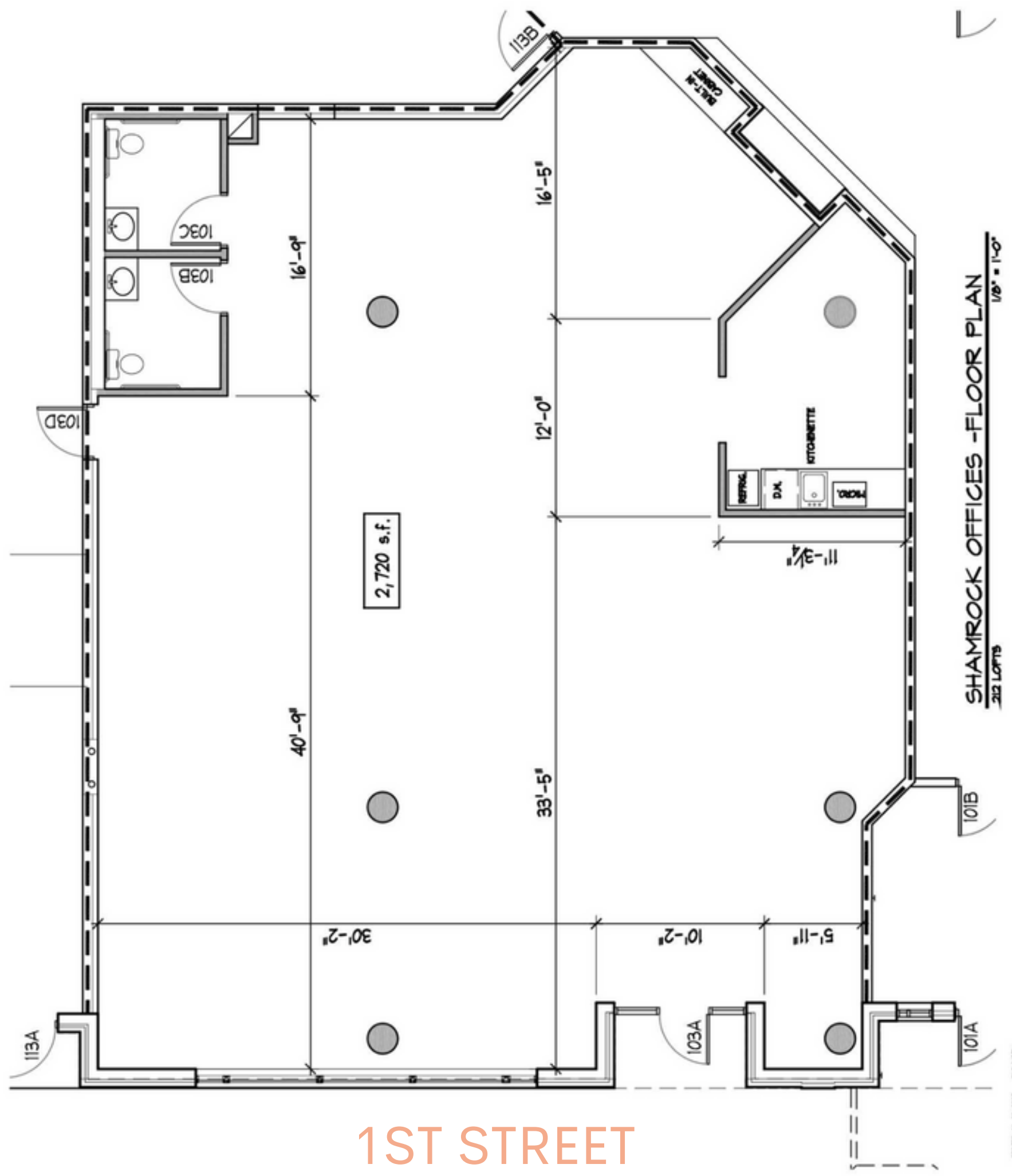
Highlights: Modern storefront on 1st St, brick and concrete, abundant natural light, large windows, flexible layout and easily walkable.

Nearby Tenants: Martin Patrick, West Elm, Billy Sushi, Spoon & Stable, Lululemon, Outdoor Voices, Sweet Green



218 N 1st St North Loop

AVAILABLE: 800 - 2,800 SF

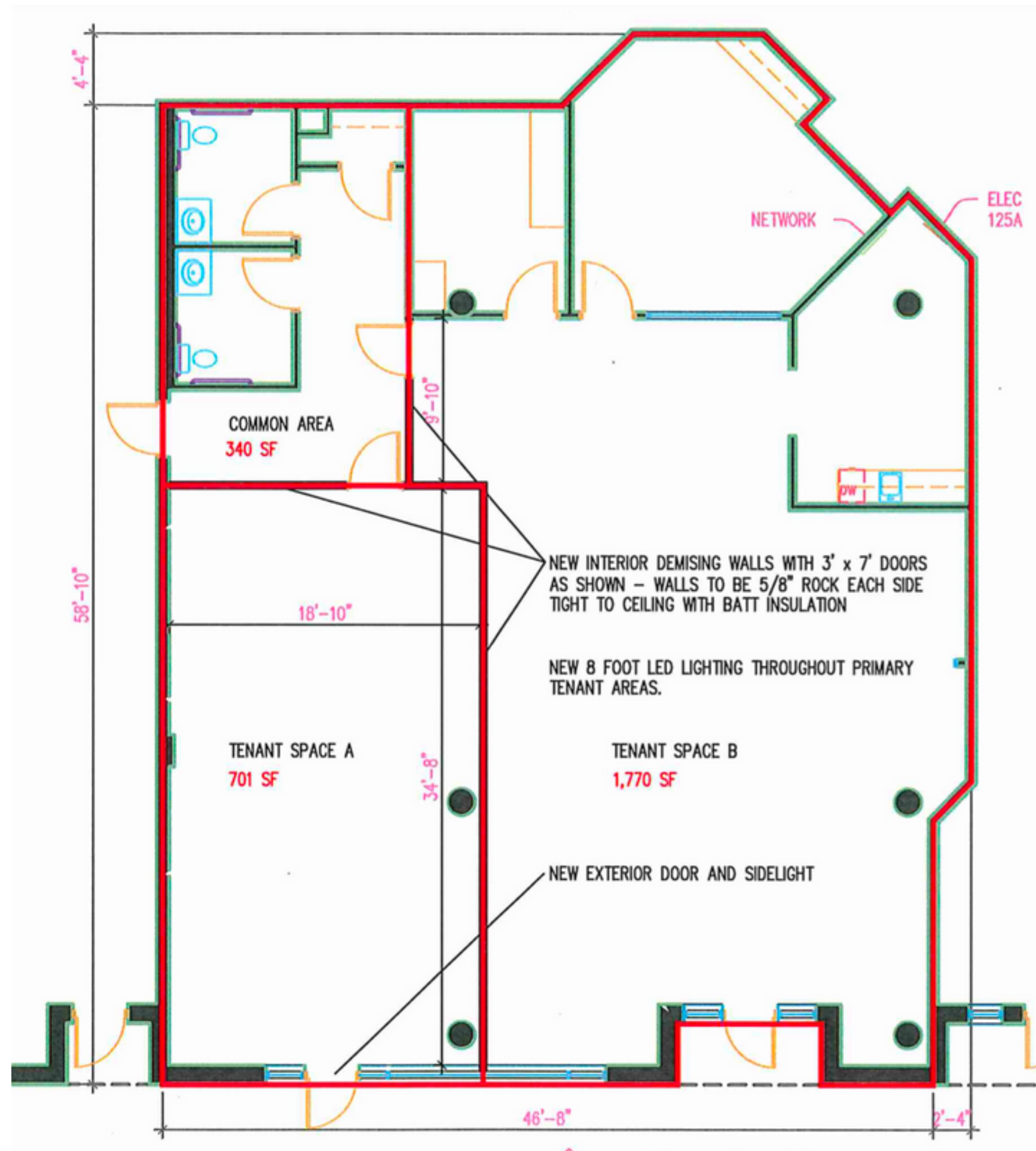


1ST STREET

218 N 1st St North Loop

AVAILABLE: 800 - 2,800 SF

*DIVISIBLE PLAN



1ST STREET



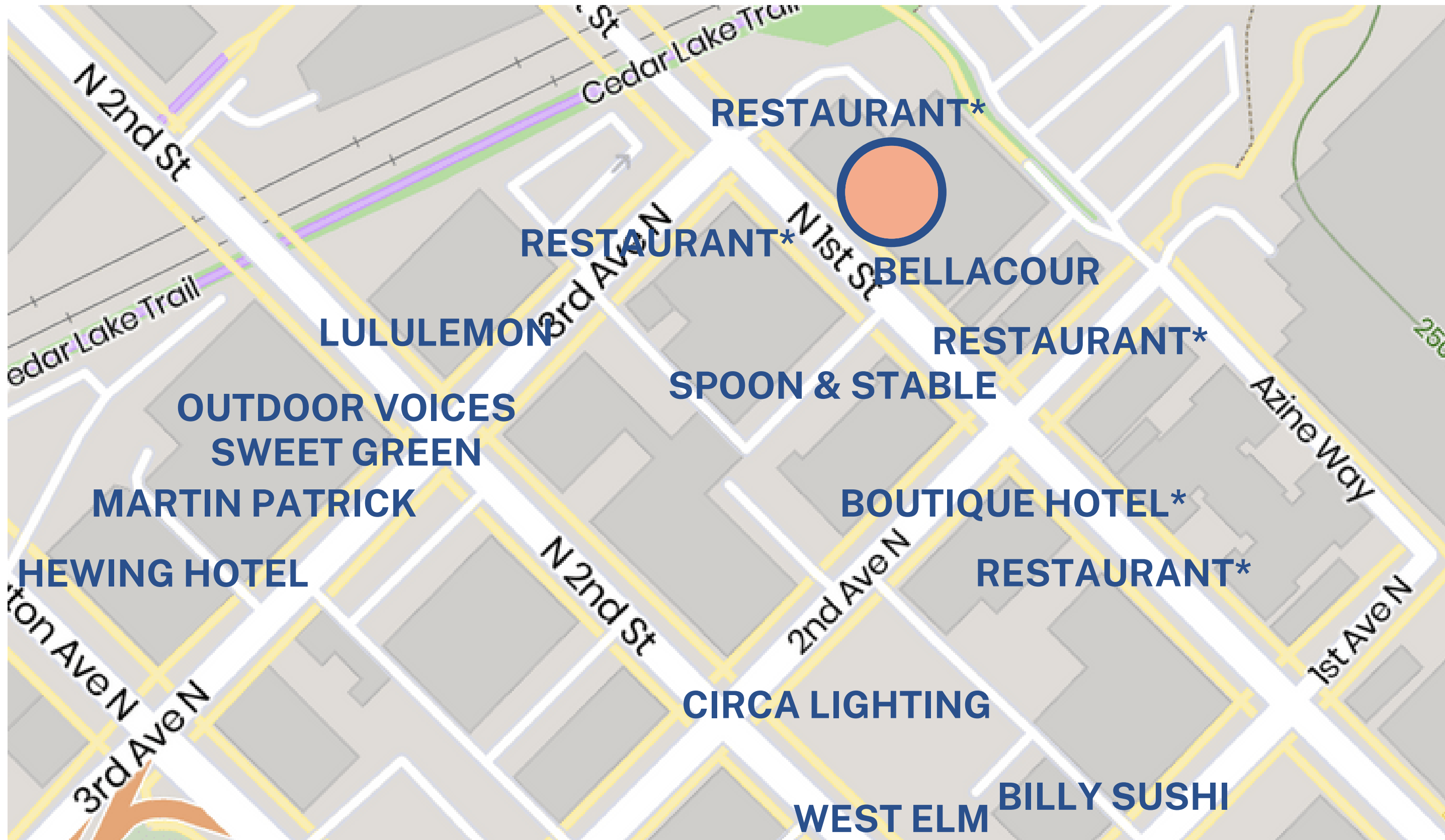
218 N 1st St North Loop

Finished Design Example:
The neighboring retail and
cafe concept,
Bellecour at Cooks





**NORTH
LOOP**
NEIGHBORHOOD



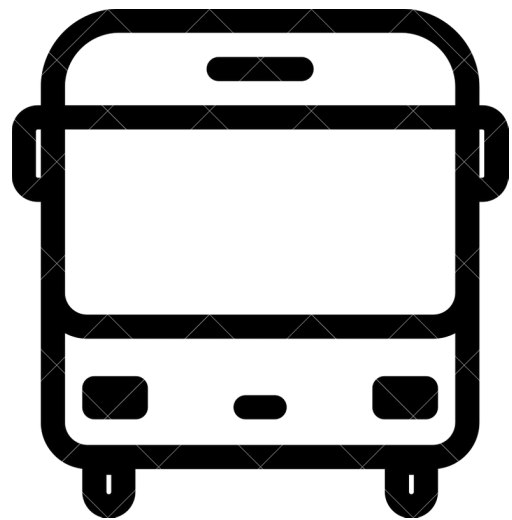
*** REPRESENTS PROJECT UNDER CONSTRUCTION**



94



96



85

Demographics:

.5 Mile

1 Mile

Population:

9,883

28,077

Households:

6,736

16,290

Average Income:

\$123,688

\$126,407

Daytime Population:

28,517

99,894

US Census Bureau Distributed by Esri 2022

Contact

BEN VINZANT

BEN@ASSEMBLYMN.COM

612.314.9252

MERRIE SJOGREN

MERRIE@ASSEMBLYMN.COM

612.308.9179

DISCLAIMER: NO WARRANTY OR REPRESENTATION, EXPRESS OR IMPLIED, IS MADE TO THE ACCURACY OR COMPLETENESS OF THE INFORMATION CONTAINED HEREIN BY ASSEMBLY MN LLC and its agents, AND THE SAME IS SUBMITTED SUBJECT TO ERRORS, OMISSIONS, CHANGES or OTHER CONDITIONS. WE MAKE NO REPRESENTATION AS TO THE CONDITION OF THE PROPERTY IN QUESTION.

