

ASSEMBLY

Development • Brokerage • Consulting

**2301 California Street NE
Minneapolis**

**Retail/Flex Space
For Lease**



2301 California Street NE

Canvas Apartments is a new construction, mixed-use development in the Bottineau neighborhood of Northeast Minneapolis. The street level offers an incredible 24,000 SF of eye-catching Retail/Flex Space with back-end production, spaces divisible to 6,000 SF. Floors 2-5 include 160 affordable apartments.

This is a perfect opportunity for startups, artists, product development companies, consumer packaged goods businesses and more to make this desirable NE Minneapolis location home. This property offers excellent visibility, 18' clear heights, and a superb geography within Northeast Minneapolis. Construction will be completed Spring 2023.

2301 California Street NE

LEASE RATES: NEGOTIABLE

Year Built: 2023

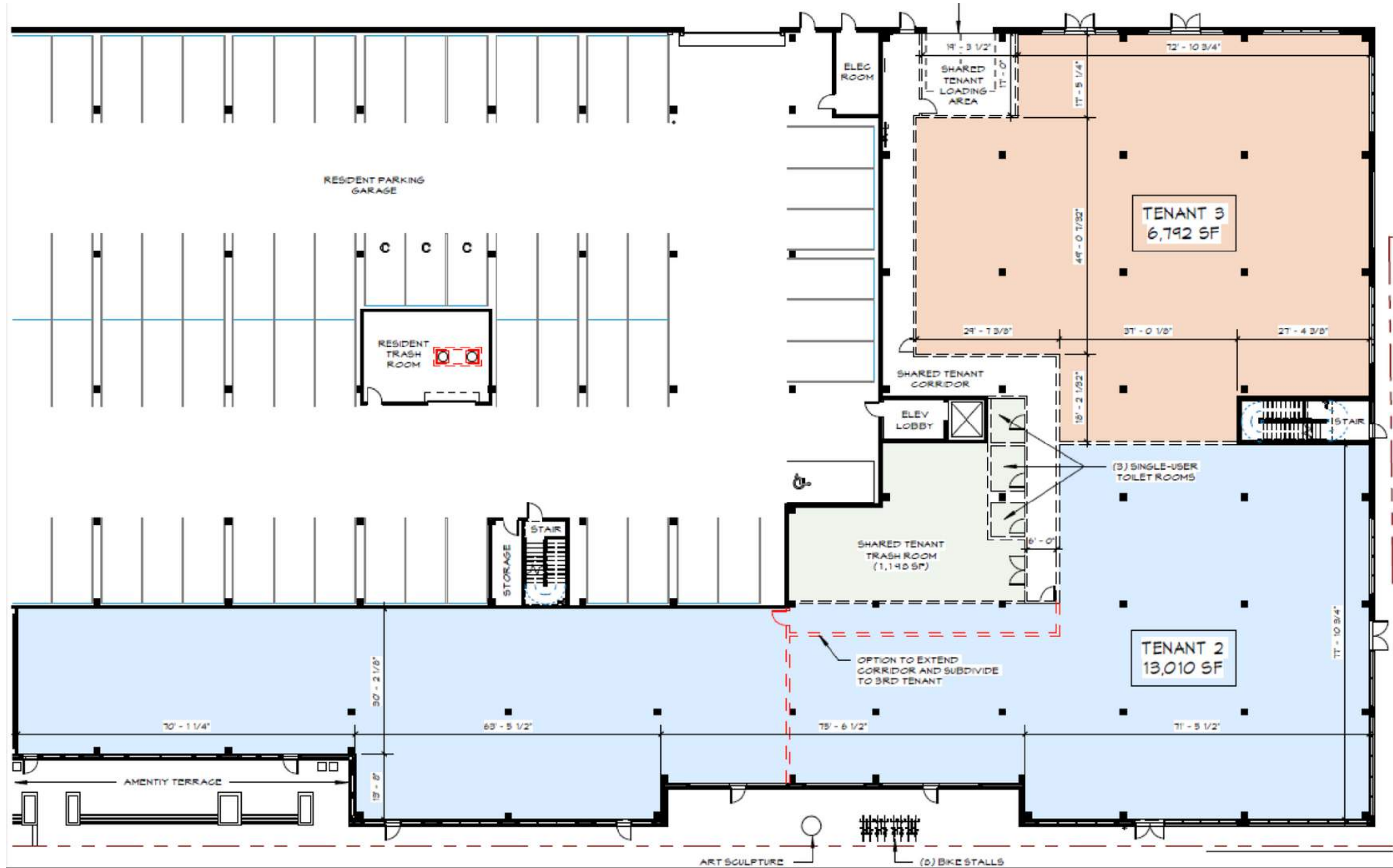
Available: 6,000 – 24,000 SF ground floor flex space with excellent visibility

Features: New construction, huge windows, prime Northeast location, 18" clear height

Nearby: Fulton Brewery, Mojo Coffee Gallery, The Sample Room, Hai Hai, Grumpy's Bar, Northeast Arts District



First Floor Building Plan



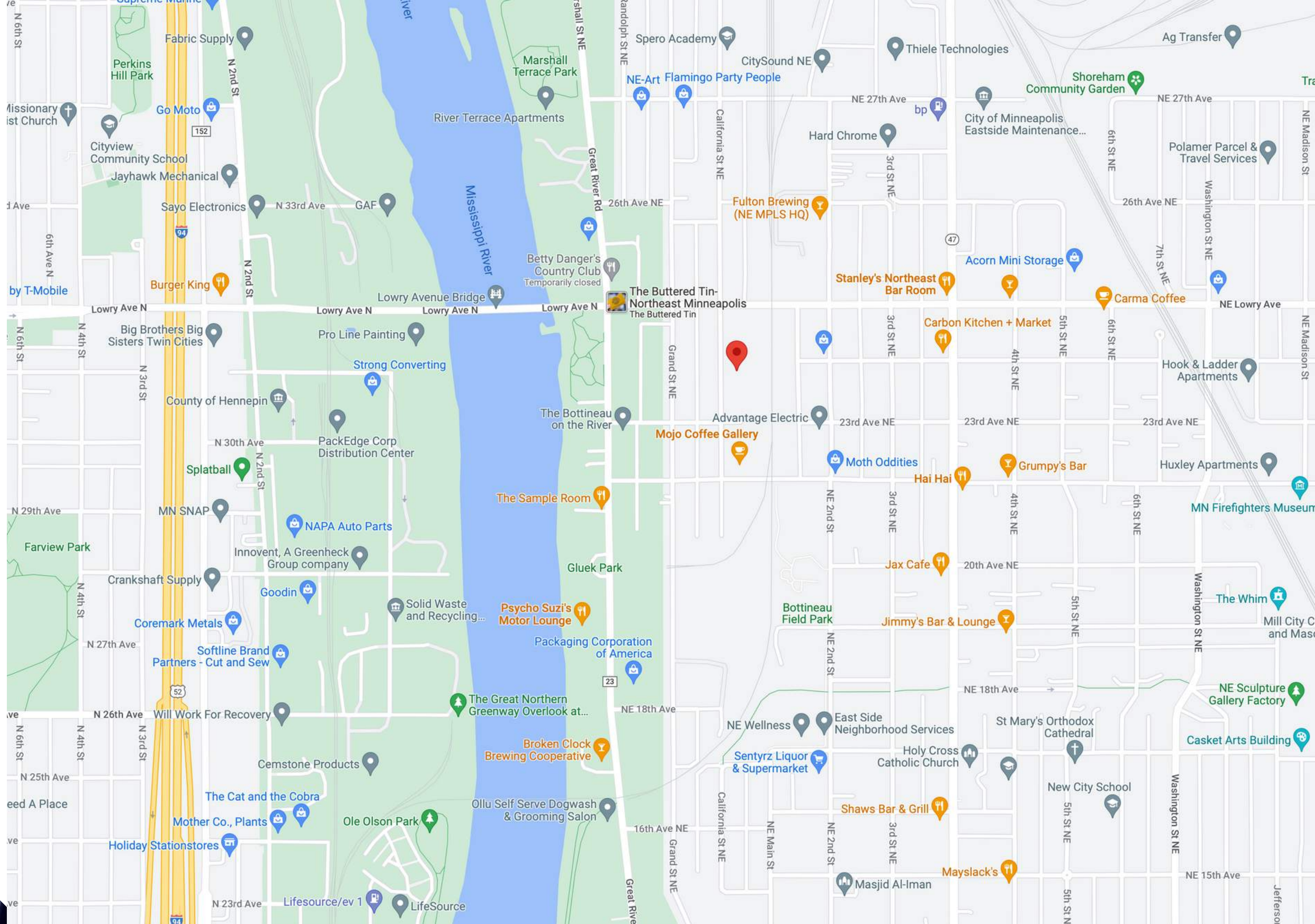


PRODUCTION

PRODUCTION

PRODUCTION

Northeast Minneapolis



Disclaimer

NO WARRANTY OR REPRESENTATION, EXPRESS OR IMPLIED, IS MADE TO THE ACCURACY OR COMPLETENESS OF THE INFORMATION CONTAINED HEREIN BY ASSEMBLY MN LLC AND ITS AGENTS, AND THE SAME IS SUBMITTED SUBJECT TO ERRORS, OMISSIONS, CHANGES OR OTHER CONDITIONS. WE MAKE NO REPRESENTATION AS TO THE CONDITION OF THE PROPERTY IN QUESTION.

Contact

NICK PETERSON

NICK@ASSEMBLYMN.COM

612.205.5690

EDDIE LANDENBERGER

EDDIE@ASSEMBLYMN.COM

612.978.3257

