

2521 27th Ave S, Minneapolis

Retail/Office Space For Lease



2521 27th Ave S, Minneapolis

For Lease

Specifications

Year Built: 1914

Building Area: 10,120/SF

Rentable sq ft: 2,000/SF

Parking: Street Parking

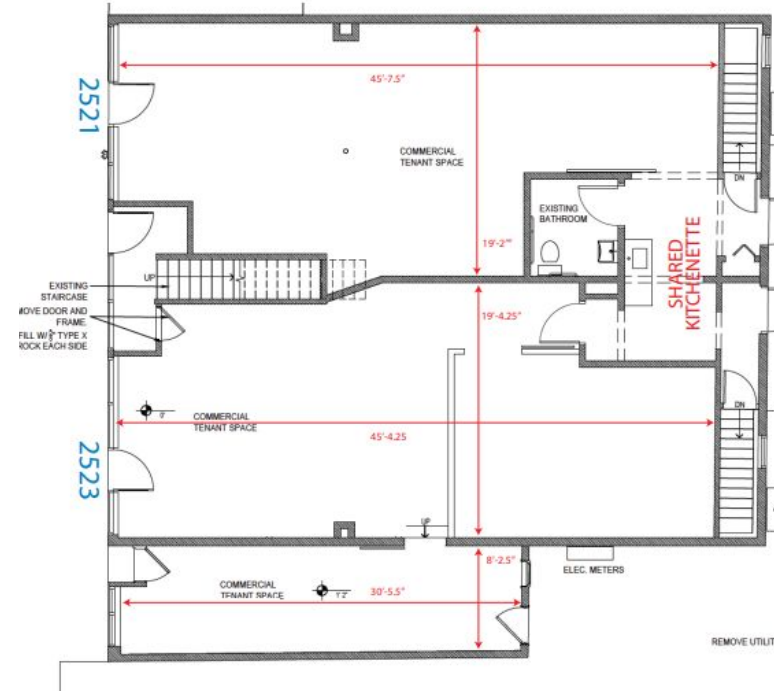
Lease Rate: \$13/SF

Taxes + Cam: \$9/SF

Features: In unit ADA restroom & Kitchenette

Comments

Located along 27th Ave S. near the Seward neighborhood of Minneapolis. With easy access to public transit.



ASSEMBLY

Development • Brokerage • Consulting

2521 27th Ave S, Minneapolis

FOR LEASE



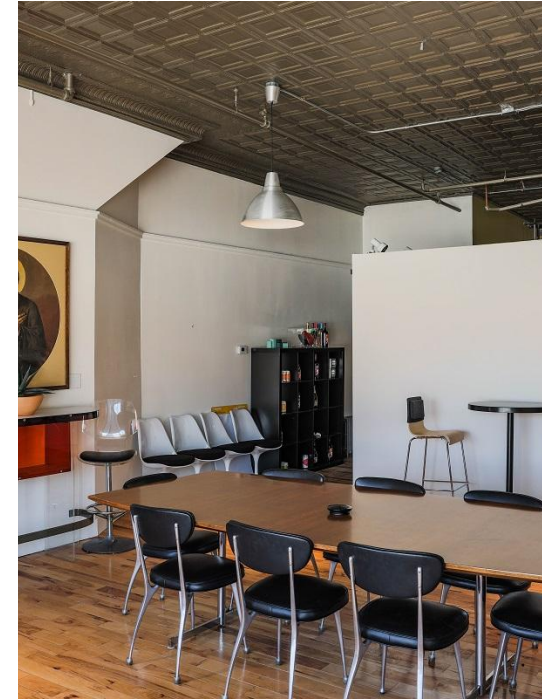
2521 27th Ave S, Minneapolis

FOR LEASE



2521 27th Ave S, Minneapolis

FOR LEASE



2521 27th Ave S, Minneapolis

Map

